



FMINDK30 Fitting Instructions



Please thoroughly read through and familiarise yourself with these instructions in their entirety prior to beginning any part of the installation process of any component. Please also ensure the vehicle and engine has cooled down sufficiently to avoid risking possible skin burns or other injury.

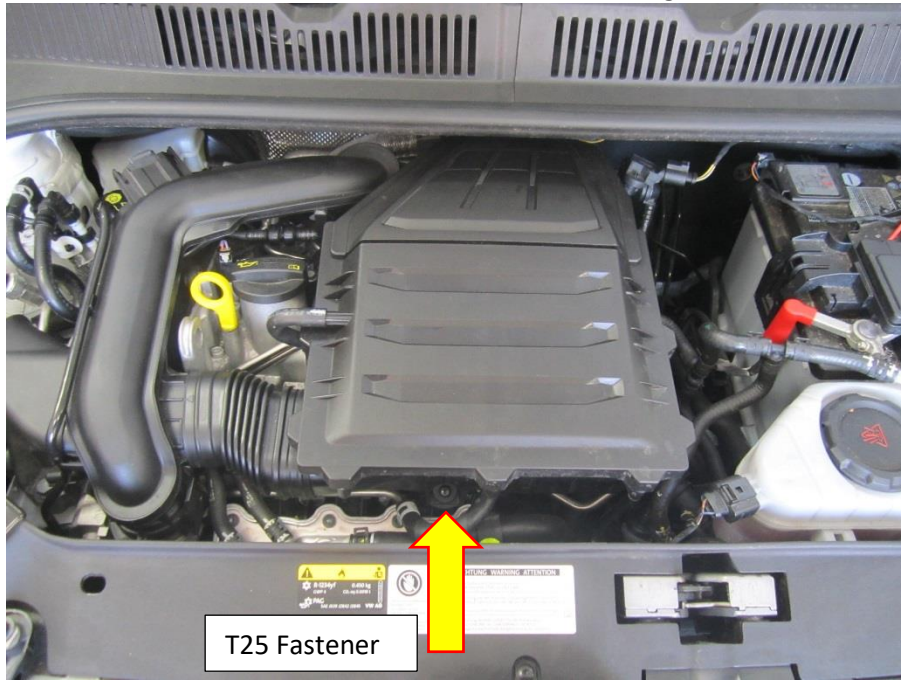
TOOLS NEEDED:

Hose Clamp removal tool/Long nose pliers

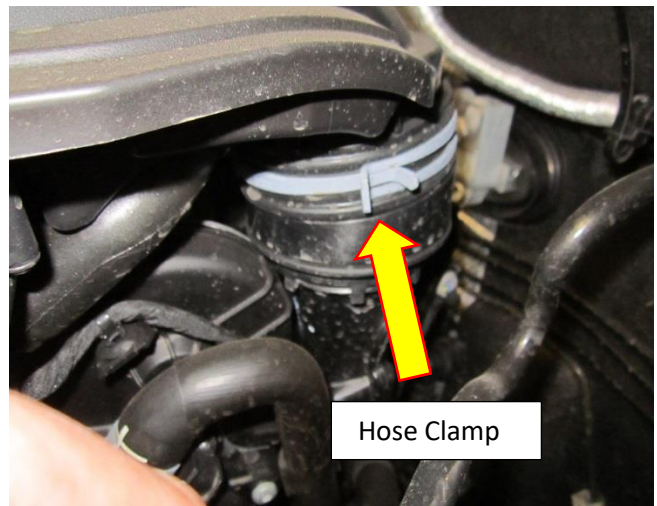
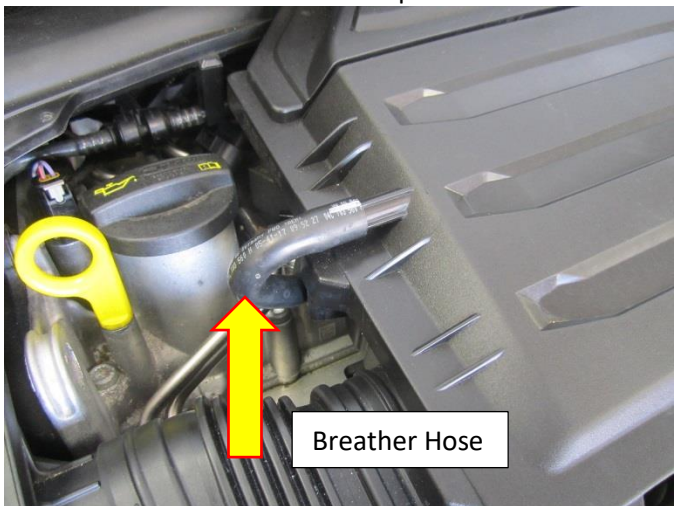
10mm spanner

T25 Torx driver

1. Open the bonnet and locate the air box. There is a T25 torx fastening which needs to be removed.



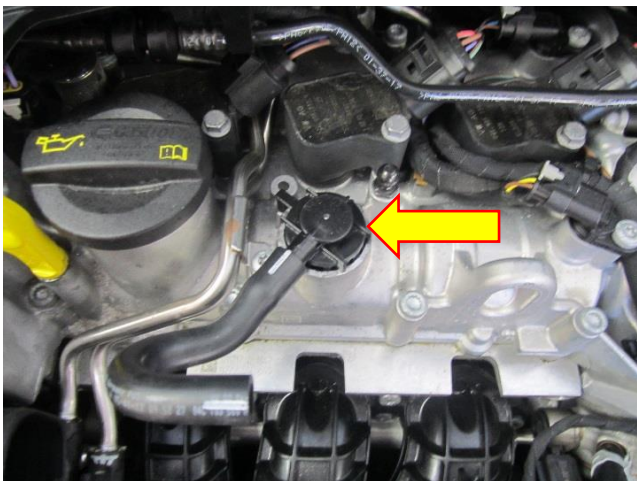
2. Remove the breather hose from the air box, this will just pull off. Next, remove the spring hose clamp with a hose removal tool or some pliers.



3. Now you will be able to remove the air box from the engine bay, this should just pull out.



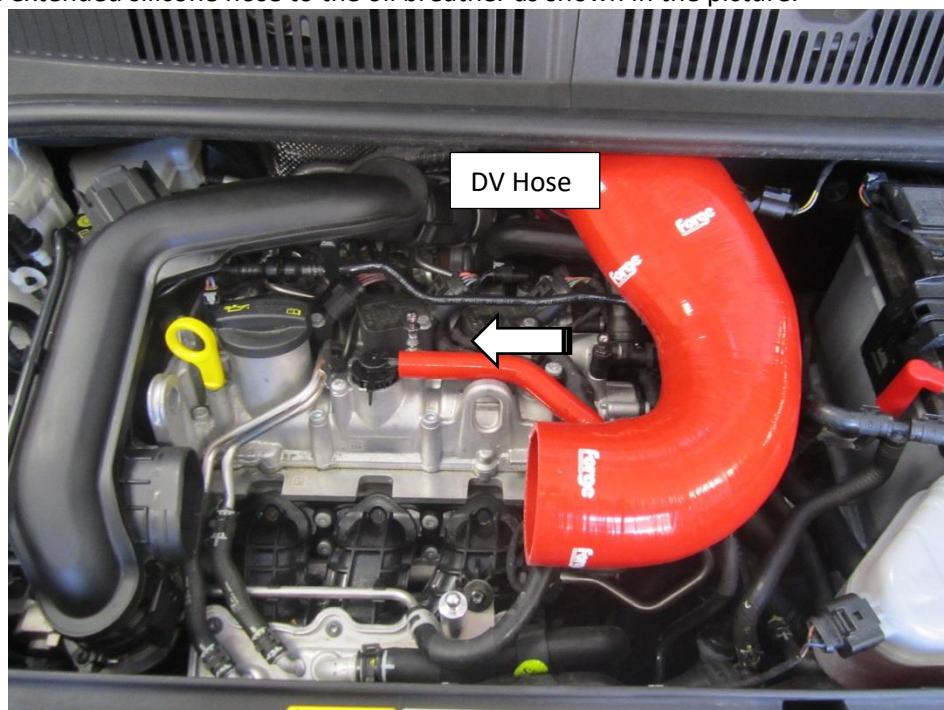
4. With the air box removed from the vehicle, locate the oil breather outlet and remove the rubber hose. The plastic breather outlet needs to be re-positioned. Use a flat blade screw driver or similar to lift the plastic breather upwards so that you can twist it into its new orientation as shown in the bottom picture.



5. Take the silicone Forge intake hose and the 80mm hose joiner (shorter joiner) and push the hose joiner into the hose with half of the joiner showing. Attach the provided hose clamp but do not tighten it all the way as you may need to adjust the hose later.



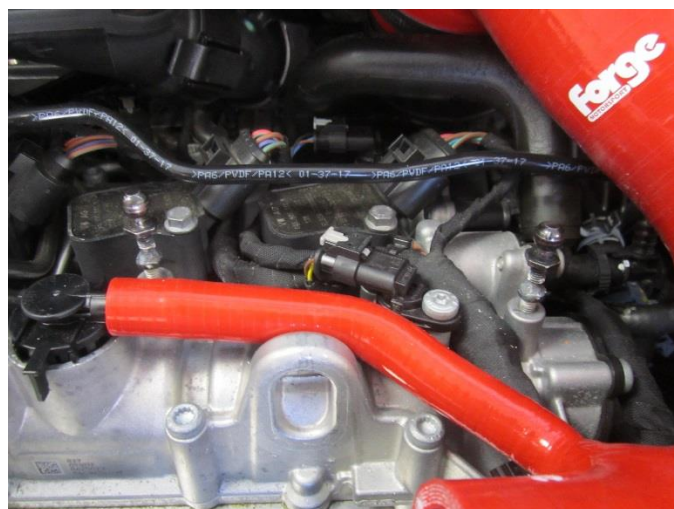
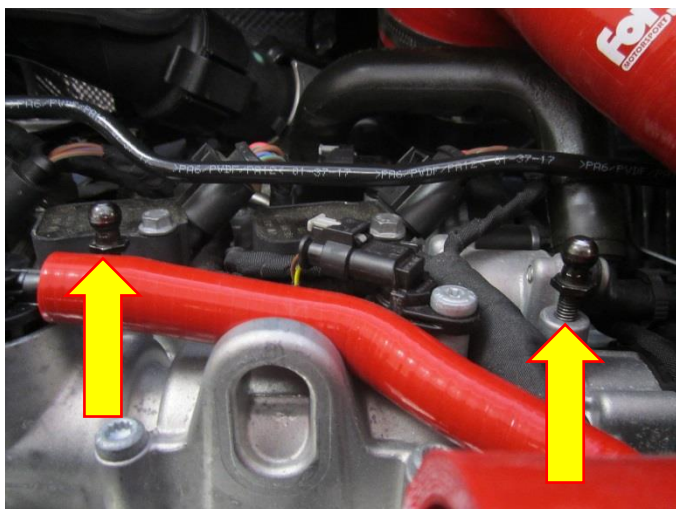
6. Fit the silicone hose at the joiner end to the OE rubber inlet hose and push it in so it's seated snugly. Again, you will need to use a spring clamp removal tool or pliers to secure the joiner to the OE rubber inlet hose. Attach the extended silicone hose to the oil breather as shown in the picture.



7. Take the alloy mounting peg and angled bracket from the kit and fix them together with the M6x12 Allen cap and spring washer as shown in the picture below. Attach the mounting peg to the airbox mounting point on the inlet manifold using the OE T25 torx from the air box.



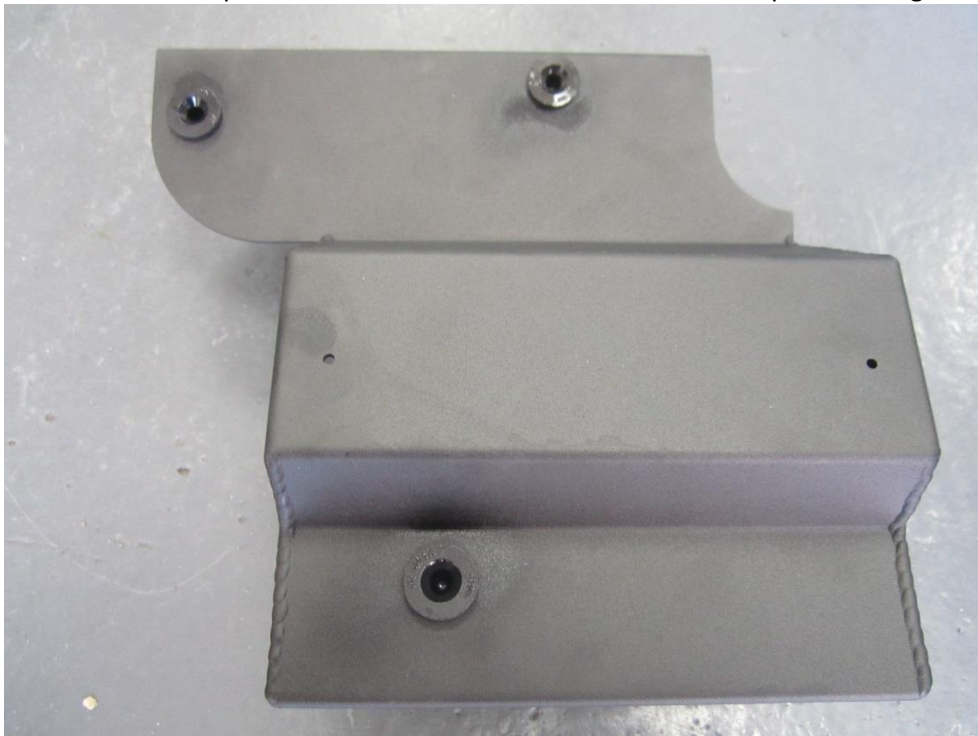
8. Remove the original air box mounting pegs and attach the two steel mounting pegs from the kit on top of the rocker cover



9. Remove the two rubber mounting grommets from the air box, use a flat blade screw driver or trim tool to remove them from the air box. Take your time as they are tightly fitted.



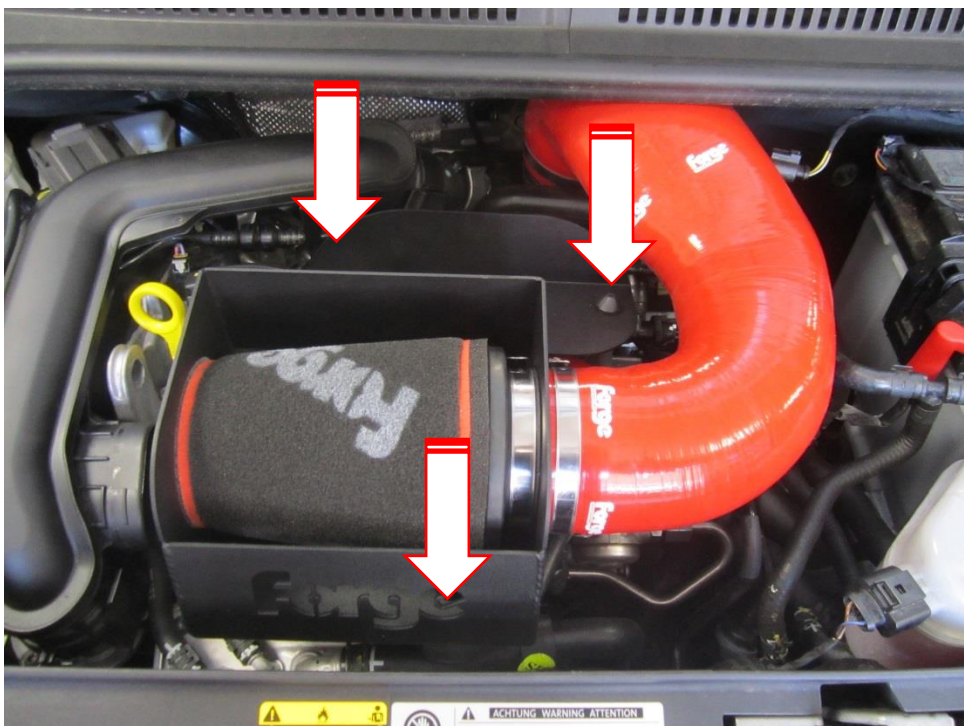
10. Insert the two rubber mounting grommets from the air box and the one supplied with the kit into the Forge heat shield as shown in the picture. You will need to lubricate them to help with fitting.



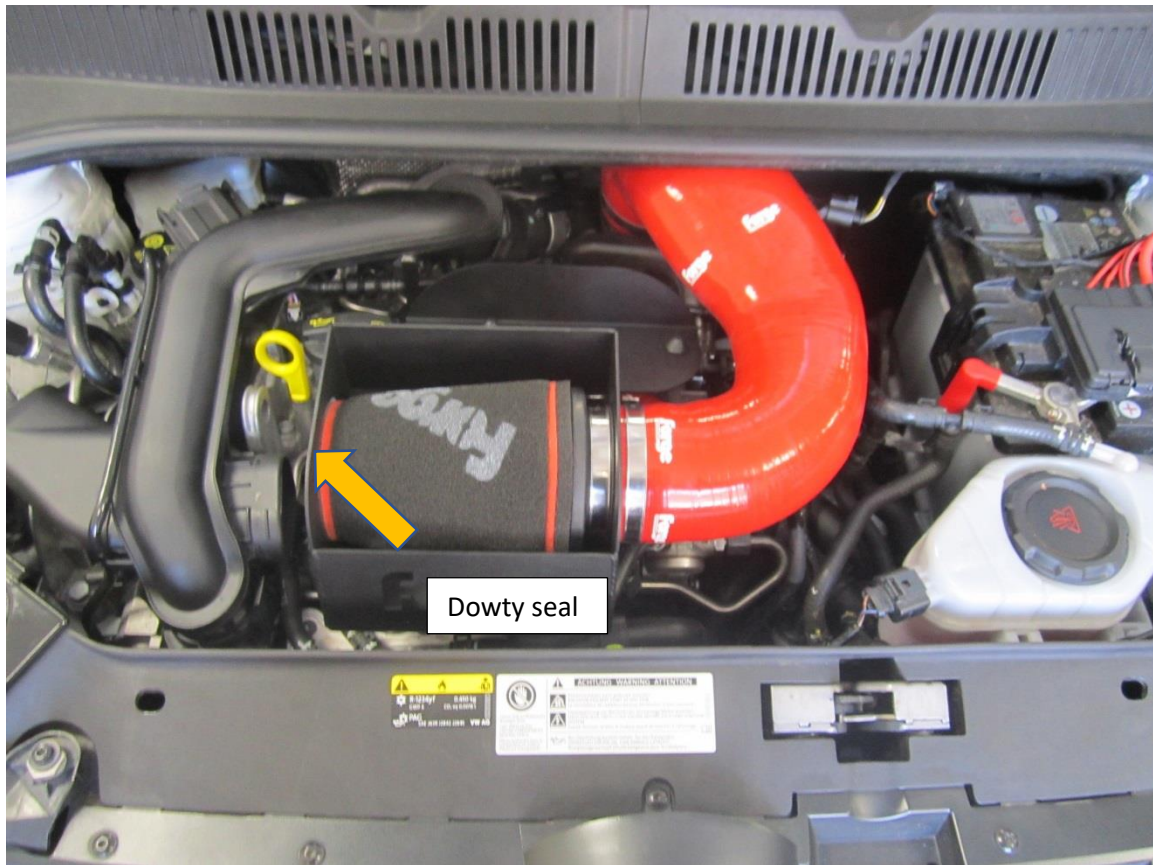
11. Place the Forge hi-flow filter into the heat shield. Fit the 76mm hose joiner to the other end of the Forge cone filter, leaving half of the joiner on show. Use the hose clamp to secure the joiner to the filter.



12. At this point, you will be able to install the Forge heat shield. Loosely place one of the larger hose clamps on to the end of the intake hose. Now angle the shield and filter to allow the intake hose to fit to the coupler. Line up the three rubber mounting grommets with the three mounting pegs. When lined up, press the shield down firmly into place. Twist the filter into the desired orientation and secure the alloy coupler with the hose clamp.



13. The installation of the Forge FMINDK30 is now complete, take your car for a test drive and enjoy.



Check out WWW.FORGEMOTORSPORT.CO.UK and WWW.FORGEMOTORSPORT.COM

For a full range of performance products for your vehicle.

As always, with any questions or concerns about this product or anything else, please feel free to contact your local or preferred Forge Motorsport Dealer/Installer, or you may contact us directly.

Forge Motorsport UK – (+44)1 452 380 999/info@forgemotorsport.co.uk

Forge Motorsport US – (407)-447-5363/sales@forgemotorsport.com



Forge Motorsport



@forgemotorsport



@forgemotorsport