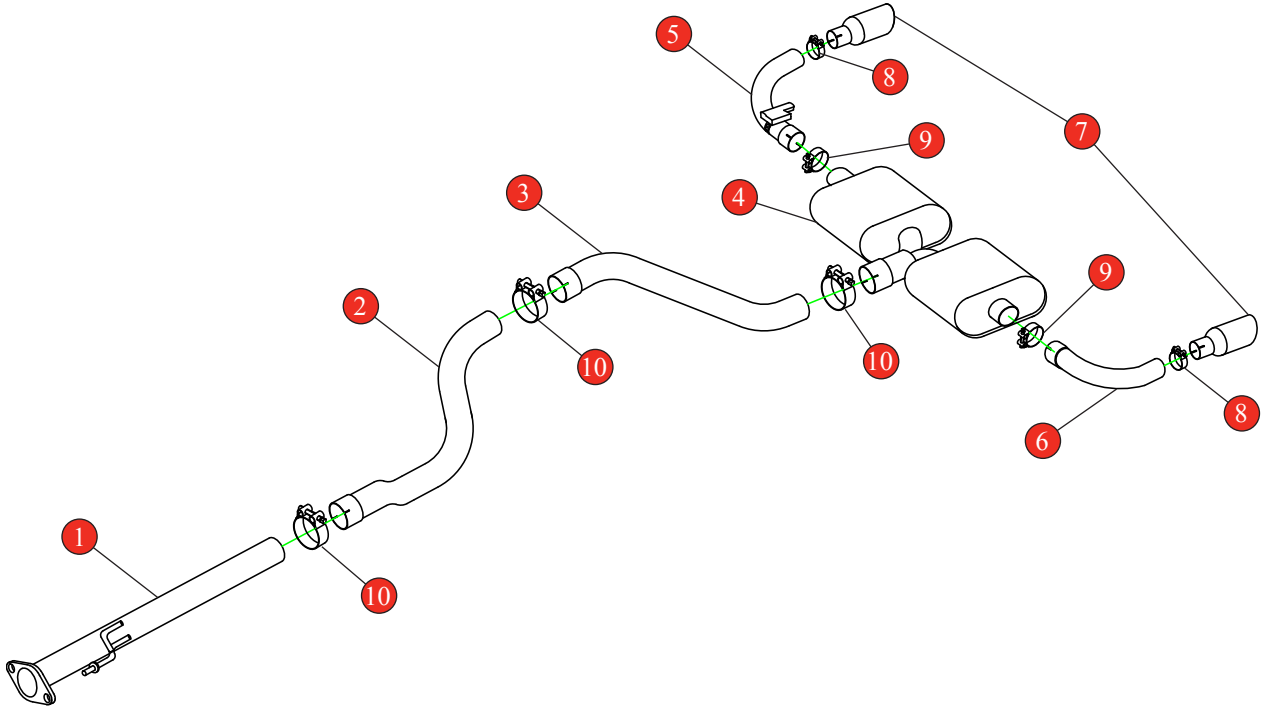


Car	Hyundai i30 N / N Performance	Part No.	SHYS101
Year	2017 - Current	Fit Kits	327FK
Notes	Where not supplied use original fittings. Does NOT fit with OPF/GPF Model's	Features	Pipe Diameter:- 76.2mm

Estimated Fitting Time: 60 Minutes



NO.	PART NO.	DESCRIPTION	QTY
1	001HY	Front Pipe	1
2	002HY	Centre Pipe	1
3	003HY	Link Pipe	1
4	004HY	Rear Silencer	1
5	005HY	RH Trim Connecting Pipe with Valve	1
6	006HY	LH Trim Connecting Pipe	1
7	Z023.10152	114mm Polished Daytona Trim	2
Fit Kit			
8	Z016.10064	63-68mm H/D Clamp	2
9	Z016.10070	65mm Heavy Duty Clamp	2
10	Z016.10062	79mm Heavy Duty Clamp	3

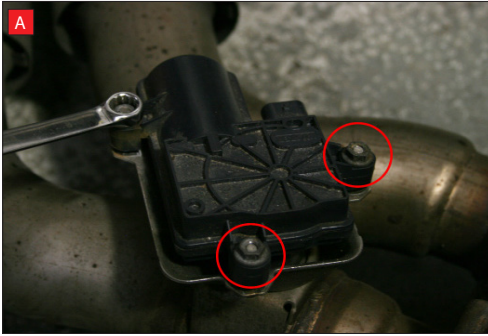
E-MARK	N/A
DATE	18/03/2019
ISSUE	00
AUTHORISED	J.Harkin

NOTE: ENSURE SCORPION SYSTEM IS CLEAR OF MOVING PARTS AND ALL ORIGINAL FUNCTIONS WORK CORRECTLY.



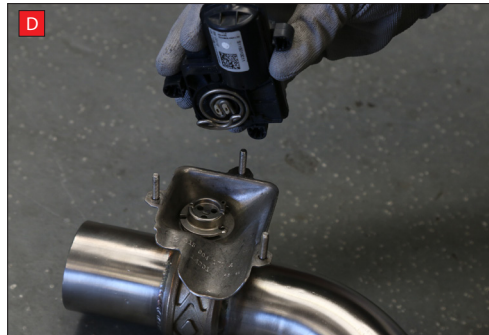
STAY CONNECTED TO RED POWER.

Car	Hyundai i30 N / N Performance	Part No.	SHYS101
Year	2017-Current	Fit Kits	327FK
Notes	Where not supplied use original fittings. Does NOT fit with OPF/GPF Model's	Features	Pipe Diameter:- 76.2mm



A) After you have removed O.E exhaust you will need to swap the valve motor to the Scorpion exhaust. Remove the 3 nuts (keep them safe, as you will need them to bolt the electronic valve motor to your Scorpion Exhaust).

B) Lift up the motor. You will now be able to see the torsion spring (This must stay on the electronic valve motor to work with Scorpion Exhaust).



C) Rotate Scorpion valve so it aligns with the torsion spring.

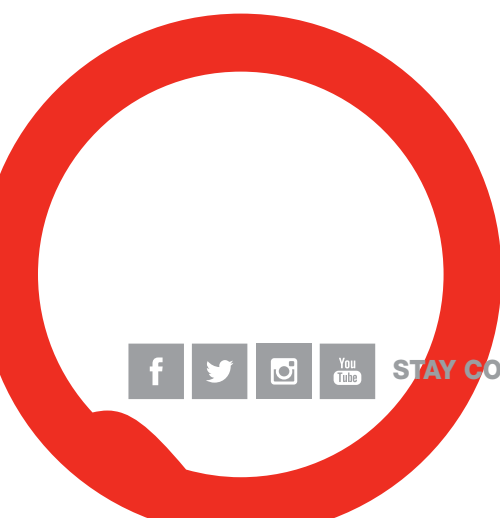
D) Now fit the O.E electronic valve motor ensuring the spring seats correctly to the lugs of the valve.

E) Using the 3 O.E nuts secure in place.



Once happy with fitment of Scorpion Exhaust, fully tighten up all clamps and fixing and plug in the electronic valve motors.

NOTE: ENSURE SCORPION SYSTEM IS CLEAR OF MOVING PARTS AND ALL ORIGINAL FUNCTIONS WORK CORRECTLY.



STAY CONNECTED TO RED POWER.